



PEM GENERATION KENYA

From Pain Points to Power Nodes

Abstract

“The PEM Generation is a transformative movement empowering Kenyan youth to turn challenges into opportunities.”

Margaret Mutua & Anthonie Torre



The PEM Generation Kenya



The PEM Generation Kenya

The PEM Generation is a transformative movement empowering Kenyan youth to turn challenges into opportunities. In collaboration with NEXUS NextGen, Elevate SMEs, and FES, we're launching a platform that redefines personal and professional development across all 47 counties. Using PEM (Personal Employability Mapping) and VRR (Vulnerability, Resilience & Risk Analysis), youth identify their skills, talents, and resilience, building a community-driven infrastructure for agency, trust, and future-making. This isn't just a program, it's a mindset shift where youth are designers of their own futures, not just a "target group."

From Pain Points to Power Nodes

Kenya's youth (15-34) make up over 35% of its 54 million population, yet unemployment exceeds 20%. The world is changing, technology, automation, and globalization are reshaping opportunities. The PEM Generation equips youth to stay relevant and resilient by transforming:

- **Social Pain Points into Power Nodes:** Limited education, gender inequality, political exclusion, and distrust in institutions become pathways for peer learning, agency, data-driven action, and transparency.
- **Economic Pain Points into Power Nodes:** Unemployment, lack of finance, and regional inequality turn into visible skills, alternative legitimacy (PEM profiles), and innovation from overlooked areas.

Where systems fail, there is space for imagination and action.

PEM and VRR are not external interventions, but community-based infrastructures for agency, trust, and future-making.

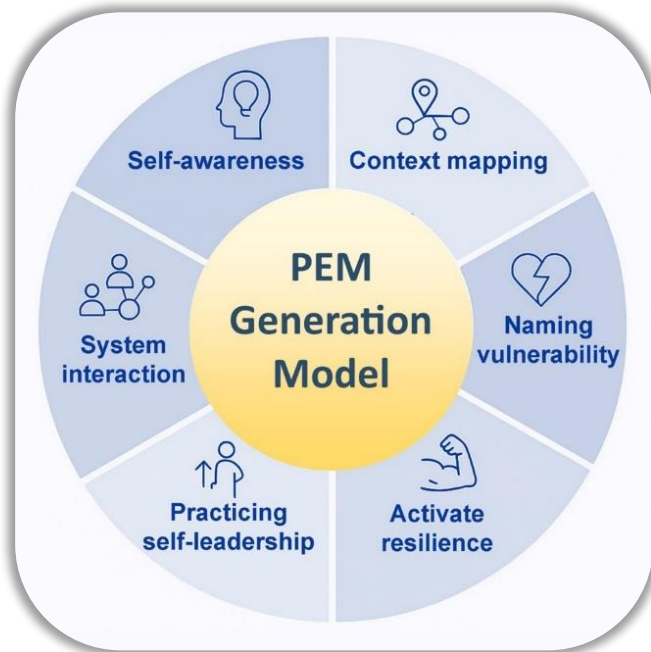
The PEM Generation Kenya

What if the very barriers young people face is precisely where transformation begins?

Youth are no longer approached as a "target group," but as designers of their own futures.

In collaboration with NEXUS NextGen, Elevate SMEs, and FES, we are launching a platform that can transform both lives and organizations in Kenya:

The PEM Generation – Empowering Resilience, Unlocking Potential.



In a world of constant change, a new generation rises—one that embraces challenges, sees vulnerability as strength, and resilience as a core competency. This is The PEM Generation: a movement, a mindset, and a platform for reshaping personal and professional development.

A World in Transition

The world has shifted. Technology, automation, and globalization have redefined how we live, work, and learn.

Traditional career paths are vanishing, and new opportunities arise faster than we can grasp them.

So how can people and organizations remain relevant, resilient, and future-ready?

The PEM Generation is a radical shift: youth across all 47 counties of Kenya are taking charge of their own development.

Using **PEM (Personal Employability Mapping)** and **VRR (Vulnerability, Resilience & Risk analysis)**, they identify their talents, skills, challenges, resilience—and build a new public infrastructure from the ground up.

- **PEM** is a structured method that helps young people visualize their personal skills, talents, and aspirations. It promotes employability, self-reflection, and peer-to-peer learning.
- **VRR** adds a deeper layer, mapping out vulnerabilities, resilience, and risks in their environment—including gender dynamics, social norms, and local barriers.

Break through inertia, map your path —grow with PEM!

Examples of the outcomes of Personal
Employability Mapping (PEM)

Aspect	Relevance	Focus	Result
Intervention	Personalized support through structured mapping of ambitions, competencies and contextual barriers.	Clarifying employability profile and identifying personal growth paths.	Activating self-direction and concrete steps toward work, education or meaningful engagement.
Prevention	Early insight into employability potential and stagnation risks through reflective tools and dialogue.	Strengthening intrinsic motivation and adaptive coping strategies.	Sustaining development by anchoring identity, perspective and action in personal meaning.

Break through fragility, build resilience —grow with VRR!

Examples of the outcomes of
Vulnerability Resilience Risk analysis (VRR)

Aspect	Relevance	Focus	Result
Intervention	Targeted support based on mapping vulnerabilities, risks, and resilience gaps.	Identifying critical risk factors and resilience deficits.	Designing interventions that reduce vulnerability and foster stable progress.
Prevention	Early detection of instability factors across personal and systemic domains.	Enhancing foresight, resilience planning, and proactive response.	Preventing escalation by embedding resilience in daily life and support systems.

Together, PEM and VRR form an inclusive methodology where youth are recognized as knowledge holders, data producers, and designers of transformation—not from top-down policy, but from their lived reality.

They are **The PEM Generation**—and they are turning pain points into power nodes.

Social Pain Points → Social Power Nodes

1. Limited Access to Quality Education

- *Pain Point:* Many rural youths lack access to quality secondary or tertiary education.
- *Power Node:* PEM creates learning pathways in practice. Youth develop skills, reflect on their potential, and grow digital competencies through peer learning. The informal becomes professional.

2. Gender Inequality and Social Norms

- *Pain Point:* Girls and young women face restrictive traditional roles.
- *Power Node:* VRR makes these constraints visible and discussable. PEM recognizes and strengthens their agency as data-makers, storytellers, and changemakers.

3. Political Exclusion

- *Pain Point:* Youth feel sidelined from decision-making
- *Pain Point:* Corruption and opaque governance erode legitimacy.

4. Lack of Trust in Institutions

- *Power Node:* Youth-led data through PEM/VRR rebuilds trust. Transparency begins with shared knowledge rooted in the community.



The PEM Generation Kenya



Economic Pain Points → Economic Power Nodes

1. Unemployment and Informal Work

- *Pain Point:* Most youth work informally, without protection or perspective.
- *Power Node:* PEM helps youth make their skills and ambitions visible—the first step toward self-aware entrepreneurship in the data economy.

2. Lack of Access to Finance and Entrepreneurship

- *Pain Point:* Especially young women are excluded from credit access.
- *Power Node:* PEM profiles serve as alternative legitimacy tools—a social CV based on real-life capability, not formal degrees.

3. Regional Inequality

- *Pain Point:* Youth in peripheral areas are systematically overlooked.
- *Power Node:* VRR maps both the vulnerabilities and resilience of these regions. PEM shows there is value, leadership, and innovation even in the most neglected places.

Theoretical Foundation: Knowledge as Power

Research by leading Kenyan scholars underlines the urgency and relevance of this approach:

- **Prof. Catherine Ndinda:** Gender norms restrict participation; PEM/VRR empowers women to reposition themselves.
- **Dr. Alex Awiti:** Education fails to link to work; PEM is a hands-on solution.
- **Prof. Winnie Mitullah:** The informal economy demands new forms of visibility; PEM profiles provide just that.
- **Dr. Bitange Ndemo:** Digital technologies offer local growth opportunities; PEM/VRR operationalizes them.
- **Prof. Karuti Kanyinga:** Political exclusion demands structural participation; participatory data is its foundation.

The Launch: 12th August 2025

On International Youth Day, we kick off with 2,000 youth (with representation from 3 Counties: Nakuru, Kisumu and Makueni) completing PEM/VRR assessments. This hybrid event in Nairobi will feature:

- Movement Launch & 5-Year Plan Unveiling: A roadmap to empower 18.9M youth by 2029.



The PEM Generation Kenya



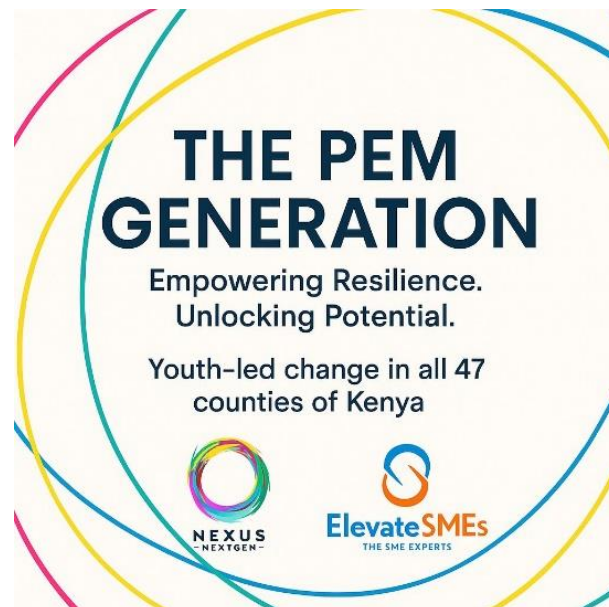
- PEM & VRR Workshops: Hands-on sessions showcasing personalized profiles.
- Entrepreneurship Pitch Fest: Youth compete for seed funding.
- Stakeholder Summit: Partners align for nationwide impact.
- Cultural Showcase: Celebrating Kenya's diversity.

Our Vision

Starting with 2,000 youth in 2025, we'll scale to 18.9 M by 2029. By 2029, we aim for:

- Increased employment rate
- New entrepreneurs
- Significant reduction in youth unemployment

This will boost Kenya's GDP through a skilled workforce and SME growth, integrating PEM/VRR into education and exporting the model across East Africa.



JOIN US- JOIN NOW

Be a catalyst for change. Sponsor or partner with us to shape Kenya's future. Contact us to join The PEM Generation Kenya today!